


[PCI](#)

[PTA](#)

[IVR](#)

[INR](#)

[Diagnostic devices](#)

ASAHI Caravel



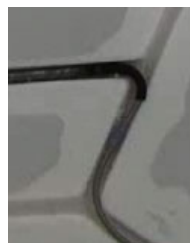
Ultra-low profile tip

galiukas – small jantis ir lankstus, kad mikrokater b t galima stumti ant nukreipian iosios vielos

Tip tapers to 0.48 mm (0.019" (1.4 Fr))

Exceptional tip flexibility

Smoothly tracks into tortuous anatomy



Low profile microcatheter

Excellent crossing profile : 0.62 mm (1.9 Fr)

Low profile design to cross microchannels

2 Caravel fit in a 6Fr guide catheter

du mikrokateriai turi tilpti 6 Fr nukreipiantij kateter ;

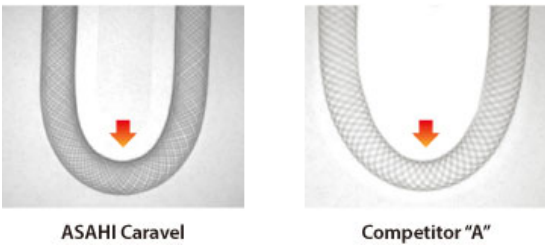
ACT ONE precision braided shaft

Unique braiding delivers best-in-class flexibility
Precision engineering ensures unmatched performance in tortuous anatomy

Internal lumen integrity

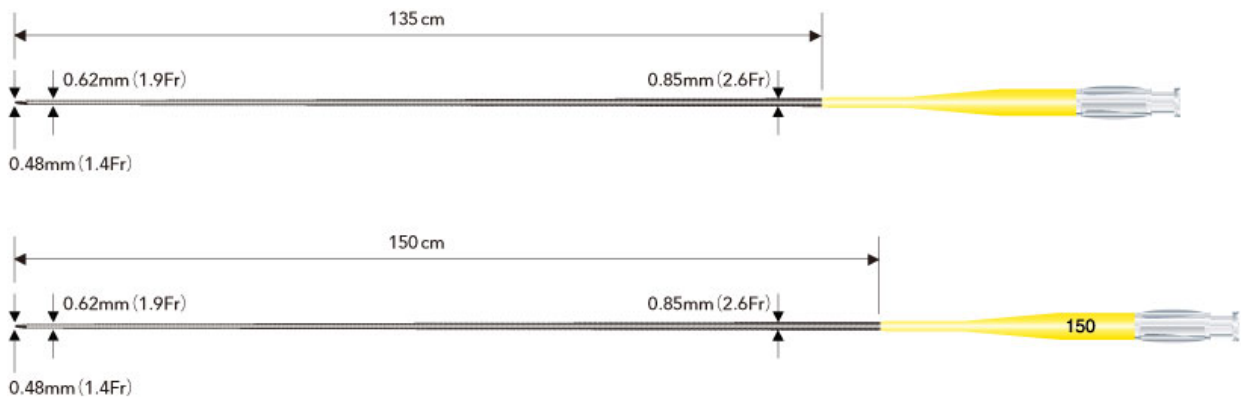
Enhanced resistance to kinking in tortuous anatomy
Facilitates optimal guidewire performance

ACT ONE Maintains Inner Lumen



užlinkus mikrokateriui linkio vietoje spindis išlieka 100 proc. (nesusiaur ja);

Structure & ordering information



Product	Catalog No.	Outer diameter			Inner diameter		Length	Hydrophilic coating length
		Tip	Distal shaft	Proximal shaft	Tip	Shaft		
ASAHI Caravel	CRV135-19P	0.48mm (1.4Fr)	0.62mm (1.9Fr)	0.85mm (2.6Fr)	0.40mm (0.016inch)	0.55mm (0.022inch)	135cm	70cm
	CRV150-19P	0.48mm (1.4Fr)	0.62mm (1.9Fr)	0.85mm (2.6Fr)	0.40mm (0.016inch)	0.55mm (0.022inch)	150cm	85cm

Indications for Use

vidurin s dalies storis ne didesnis nei 1,9 F,

This microcatheter is intended to provide support to facilitate the placement of guidewires in the coronary and peripheral vasculatures, and can be used to exchange one guide wire for another.
This microcatheter is also intended to assist in the delivery of contrast media into the coronary and peripheral vasculatures.
Do not use this microcatheter other than for use in the coronary and peripheral vasculatures.



“ASAHI”, “Caravel” and “ACT ONE” are trademarks or registered trademarks of ASAHI INTECC CO., LTD. in Japan and other countries.

